

VOLUME XLII
NUMBER 11

Potomac Valley Skiers, Inc.
WASHINGTON MARYLAND VIRGINIA

NOVEMBER 2006

www.potomacvalleyskiers.org

info@potomacvalleyskiers.org

President's Message:

SOME REFLECTIONS. Summer's gone, fall is here, and the first of the much desired ski-slopes are already in somewhat limited use. Clearly, we can see the upcoming ski season with its five PVS-sanctioned trips on our radar screens. That's good news. So is my cursory review of the months gone by, and specifically our club's events.

Being generally prone to see the glass half full, rather than half empty, I'm just delighted to recollect the many fun events we've been privileged to initiate, and to partake in. Not only is the number of such impressive, but the variety is, shall I say, stunning, given that we are a small club with a shrinking number of organizer activists, and most regrettably a declining number of participants in most, albeit not all, of these exciting activities.

Not so long ago, thanks to members Hines' hospitality, we experienced this year's All Trips Party in a stunning new setting; it was, I'd say, a memorable event. So were the more recent crabfest at Betty Lawrence's, and the Annapolis Bay picnic at the fabulous Heitchue mansion. I don't think I need to recite additional examples, such as our traditional Oktoberfest or the Blue Knob Ninth Annual Fall Foliage Weekend. That's enough proof for the variety, and those of us who attended just know how jolly each of these events really were. Obviously, we must be doing something right!

That brings me to my theme point, our means for communicating with membership. I'd venture to say that the strongest component of our diverse activities-basket is our monthly newsletter, the TOOT. It's in our mailboxes, reliably and attractively looking, around the first of each month. Its content is well written, it's clear, and concise, it delivers the information we're all interested in and are eager to have. That though doesn't happen by itself. It's the product of truly hard work by our devoted Toot editors, the Marxes (yes Bob does do a heck of a job in addition to his spouse editor), and Marvin Hass, who takes over each summer, and adds a picture and a graphic to enhance the looks, as well, as the writer-contributors, prominently our always witty Mr. Knee. We really can't thank this team enough for what they do for us month in and out. They create the club's lifeline, keeping us informed, timely, and in a very readable manner.

So, in behalf of all of us, let me say again and again, thank you good people. Keep up your good work, and be sure to know, we very much appreciate.

I also wish to thank again our just "retired" treasurer, Ray Jones, for his many years of superb service to the club, the orchestration of a very smooth transition, and also to welcome our newly appointed moneymen, Dick Laeser.

Finally, let me note that there are some vacancies on the upcoming ski trips. If you haven't made up your mind, do it now before you "miss the boat".

Lastly, remembering our stunning 40th birthday celebration just a year ago, it's timely to say, "Happy Forty First." May we continue in good health for many more anniversaries to come.

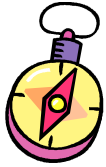
David

MONTHLY MEETING

Tuesday, November 21, 2006
7:30 PM
at the home of
Sally Finan and George Welti
in Reston, VA.

BRIAN GARDLEY...
tells all about this year's ski equipment





Directions:

Sally Finan and George Welti
11311 French Horn Lane
Reston, VA
703 – 716 – 9023

From the Beltway: Turn onto the Dulles Toll Road (Rte. 267 WEST). Exit at Hunter Mill Road and turn **left**. Turn **right** onto Sunrise Valley Drive. At first traffic signal, turn **left** onto South Lakes Drive. At first traffic signal, turn **left** onto Twin Branches Road. After passing Lake Audubon, turn **right** onto Glade Drive. Take second **left** onto Tumbletree Way. Take first **left** onto French Horn Lane. 11311 is at the end of the Cul de Sac, to the right.
OR

From the Beltway: Take Dulles Toll Road (Rte. 267 WEST) 6.5 miles west of the Beltway to the Wiehle Ave. exit. Turn **left** (south) onto Wiehle Ave for 0.2 miles. Then turn **right** onto Sunrise Valley Drive for 0.4 miles and then **left** onto Soapstone Drive for 1.5 miles. Turn **left** onto Glade Drive and proceed 0.2 miles taking then first **right** onto Tumbletree Way and then next **left** onto French Horn Lane. 11311 is at the end of the Cul de Sac, to the right.
~~~~~

**Changes:**

Garrett - [mgarrett@cox.net](mailto:mgarrett@cox.net)

Albersheim – CO instead of MD. ZIP Code is OK.


[ray\\_mckinley@comcast.net](mailto:ray_mckinley@comcast.net) new e-mail for [Ray McKinley](#)

The phone number for [Cherie Stallman](#) should be 703-933-1067

[Jack Peoples](#)  
Kensington House  
10225 Frederick Ave. Apt 500  
Kensington, MD 20895  
301-942-1052

~~~~~  
As many of you know, [Jessma Blockwick](#) was supposed to be in town last month and was planning to attend the October meeting. She was taken ill and cancelled her trip. The editor talked with her this week and she is much better but the doctors haven't been able to give her a diagnosis. She is hoping to come to visit at some time in November or December.

~~~~~  
*[Marty McNeill's](#) mother passed away recently and we send Marty, Bob, and family sincere condolences.*

~~~~~  
 On behalf of all of us I wish to express our sincere thanks to [Marvin Hass](#) for being our Webmeister since the time we first had a web site, which he, of course, engineered. Marvin has made many additions and changes to his original creation, including the posting of pictures from a variety of PVS events. Marvin's skill and dedication to this often complex task is truly appreciated and we hope that he will continue to support his club in a variety of functions that he can handle so well.
Our best to you and yours. David

~~~~~  
*I send my personal THANKS to Marvin for his willingness and expertise as demonstrated in Toot's summer editorship. Jan*

Members may have a number of questions about our new web site. This article aims to answer the kind of questions members are most likely to ask.

---

### **Why did we create a new web site in the first place?**

We wanted to place copies of Toot on the web site so that members would have an easy means of accessing current and past Toot issues without having to maintain a personal archive. Our old web hosting company did not offer a user-based passwords feature. Yet we believed that this kind of password protection is needed to protect the personal contact information and addresses of members who host our monthly meetings as well as similar information for members who run our events. ExCom minutes are also on the web site and they, too, require similar protection.

---

Another objective was updating our web site to make it more user friendly, and more attractive to potential new members and guests who are considering joining our ski trips. Marvin Hass got us off to a great start with his new design for the PVS web site. The new web site, as it now exists, has adapted Marvin's design to a standard format that is supported by all web hosting companies.

---

### **What is our URL (address)?**

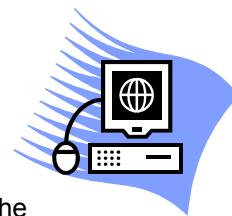
You can reach our new web site at:

<http://pvskiers.org>

or <http://potomacvalleyski.org>

www may be added to either address but is not needed to get to the web page. We added the pvskiers.org name to allow development of the new web site without interfering with access to the old web site at: <http://pvskiers.homestead.com>.

---



### **What should you enter when asked for a User Name and Password?**

Enter your name as it appears in the PVS roster as your user name. Omit spaces and punctuation. For example, my user name is David Lerner. Capitalization is important. The web hosting company does not support user names that are more than 12 characters in length. You may need to shorten (truncate) your name to fit this limit.

---

Your password is the first 8 characters of the email address listed for you in the PVS roster. Your phone number is used if you do not have a listed email address. Retain capitalization and punctuation as it appears in the roster. Example: [Dave@aol](mailto:Dave@aol). Here, the web hosting company restricts us to 8 characters, so it is necessary to stop at the 8<sup>th</sup> character.

---

Send email to [info@pvskiers.org](mailto:info@pvskiers.org) if you are receiving the Toot but you are not listed in the roster. A user name and password will be created for you. There is no on-line mechanism for changing your user name or password, but you can request a change, as noted, by sending an email to [info@pvskiers.org](mailto:info@pvskiers.org).

---

### **How can I create a web page for my trip or other PVS activity?**

You can create web pages with software that you have or that you can download for free. Microsoft Word allows you to save documents as web pages (html). Some web browsers include web composing software. Send your web page as an attachment to email addressed to [webmaster@pvskiers.org](mailto:webmaster@pvskiers.org) and we will place it on the web site.

---

### **How can I share photos from a PVS event?**

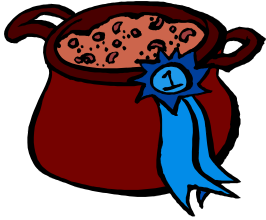
We have software that can create a photo gallery from digital pictures that you have from a PVS activity. Please see the link at the bottom of the "Photo Gallery" web page for guidelines on preparing and sending your photos so that we can construct an attractive photo web page.

---

We hope this brief expose will do the trick. If you have questions, don't hesitate; just let me know and we'll try to help. Enjoy our new web site, and mention it to your friends.

## Coming Events

This is the 20th anniversary of the PVS **CHILI HIKE**



**Sat Nov 4 1:30 PM**  
**Great Falls Park, VA**

Meet at 1:30 PM at the Great Falls Visitor's Center, Virginia side. In addition to the regular 5 mile Chili Hike, a shorter, flat 2 mile hike will be available. This is North, up the river to Fairfax County's Riverbend Park. It's along the river's edge and is smooth with no climbing. They have also just put up a series of nature interpretive signs. The fall foliage should be perfect!

After hiking, we'll have a hot and not-so-hot chili supper at Ray and Nancy McKinley's house. All are welcome to hike (but call to sign up so that we don't miss anyone) but space for chili is limited. **Call Ray or Nancy at (703) 527-7126** to sign up for hiking and/or to reserve a place at the chili supper and also to sign up to bring an appetizer, salad, or dessert. Cost for supper will be about \$8. Join us!

**National Ski Expo** November 10th, 11th, and 12<sup>th</sup>

[www.nationalskiexpo.com](http://www.nationalskiexpo.com)

Friday 2:00 p.m - 8:00 p.m.

Adults: \$10

Saturday - 10:00 a.m. - 8:00 p.m.

Children under 8: **Free**

Sunday - 11:00 am - 5:00 pm.

Free Movie Admission! For **Warren Miller's "Off The Grid"**

Door prizes and lift ticket give aways.

Equipment and clothes swap - 25% of consignment goes to Special Olympics

Dulles Expo & Conference Center [4368 Chantilly Shopping Center Chantilly, VA 20153](http://www.dullesexpo.com)

**Demo Days** WISP (see pg. 8) and **Timberline Resort in WV....** January 18th (\$2.00)



## ***Wine Tasting for Wine Connoisseurs and Wine Lovers***

**Friday, November 17, 2006 at 8:00 p.m.**

***A flight of 20 year old wines will be served along with some tasty hors d'oeuvres.***

Some of the possible wine choices are Chateau Gruaud Larose 1986, Chateau Talbot 1986, Chateau Clerc Milon 1986, Chateau Pichon Longuevell Comtesse De Lalande 1986, Insignia 1986, etc.

**Where:** John and Dorie Waddick's. 1605 N. Howard Street Alexandria, VA 22304

**Limited:** to 20 people. Cost of \$40 per person.

**Sign up:** by calling the Waddick's at 703-751-3143.

## **SKI LIBERTY MOUNTAIN - Thursday DECEMBER 21**

Anybody interested in a day of skiing before the holidays should contact Charles Huggins at **301-424-5725** so we can form car pools. If you wish to drive your own car, contact Charles so the group can look for you at Liberty Mountain Resort. Lift tickets for 4 hrs. are \$37.00, for 8 hrs. \$42.00. Those 65+ ski for half price. If anybody has free lift tickets from the National Ski and Snowboard Show



(Nov. 10-12, see above), this is a good time to use them before they expire.

## Past Events

### SEPTEMBER'S GOLF OUTING

by S. Triau

Friday, September 29, 2006, was a beautiful sunny day, a little windy, but a great day for a round of golf and for the annual PVS Golf Outing. This year's event was held at the Northwest Golf Course, located in the middle of Montgomery County. The Northwest course does not present a great variety of obstacles to the average golfer, but it is a rather long course with the total course distance being one of the longest in Montgomery County. So most of us tried to focus real hard on swinging for distance and of course found out it meant accuracy was sometimes sacrificed.



A total of eight players (5 PVSers and 3 guests) participated in this year's event and a great time was enjoyed by all. After completing the course of play we all met in the club house for some libations and the normal critiquing discussions of who hit the farthest and straightest. Usually at this point in these conversations, the total scores get lower as the conversations continue, but seeing this did not occur with this group, I must conclude every one was very happy with his or her original score.

All participants want to thank Burr Schuler and Myron Marquardt for doing a great job planning and running this event. I have to report that Myron worked so hard in planning this event he was too exhausted to participate in the activity--the real story is the morning of the event Myron was hit with a hard 24 hour virus. I am happy to report he recovered quickly as several of us played golf with him a couple days later.

### *PVS at the Strathmore Music Center...*

by R. Schwartzbard

and a great concert to boot. If you haven't been to the Strathmore Music Center then you haven't seen the newest addition to the area's cultural scene and one of the country's outstanding music venues. If you didn't go there with PVS on Sept. 16 then you missed an opportunity to see Strathmore as only an insider can see it.

Eleven PVSers were greeted by the president of the National Philharmonic who took us on a non-public backstage tour. He introduced us to the features of the building and described the unique acoustic designs that make the beautiful Strathmore Hall such a magnificent auditorium.

We joined some of the other special guests of the evening for a private reception before the concert. The first piece was the Rachmaninov piano concerto. The pianist was marvelous! It's hard to imagine a more "energetic" piano performance. Another private reception at intermission was followed by a performance of Shostakovich's Fifth Symphony, another superb fiery performance!



We ended the evening with a Champaign reception for the soloist and the conductor. It was a memorable evening by all accounts. A big thanks to David Abraham for arranging this special event for PVS.

## Past Events, cont'

### October 7-9 *Weekend at Blue Knob*

There were eight of us having left separately the damp D.C. area in quest of blue sky and brilliant colors. Well, we got there at Betty Lawrence's great chalet on top of that Pennsylvania mountain and the sky was blue, blue, blue and the leaves on the trees were gold and red and brown and mixed with green and it was...it was stupendous. What a lovely sight! And up and down every day we walked in the forest bathed by the brilliant sunshine.



But wait...the core of it, of that outing, turned out to be the camaraderie pervading our little group, that feeling of togetherness and (I know you've been waiting for



this) the FOOD. Ah, the food! Each of us had come with an exotic specialty to partake with others, secret recipes now revealed, an abundance and taste to sate and satisfy the most refined palate.

Like an unobtrusive aura over all, Betty, in her quiet and gentle ways, made sure that everybody was comfortable and happy - a delightful hostess she is - and we thank her for all her care and the good time we had.

Nancy, Ruth, Kirk, Betty, Peggy, Charlotte, Suzanne

*by Happily Anonymous*

### *Frank Shelburne Hike*

#### ARE WE THERE YET?



Carolyn Mauer, Carolyn & David Calloway, Shirley Rettig, Melissa FitzGerald and her dog, Juno (queen of the gods), and Sally Finan. Photo by Charles Huggins

Led by Sally Finan on October 18, it started out as a three-mile walk around Glen Echo on a beautiful fall day, rearing us seven stalwarts for a fine lunch at the Irish Pub. We found the parking lot and fellow hikers; we found the bike path to the canal; we found the tow path. After a couple of miles, we also found the bridge we were supposed to cross to make the circle back across the canal. Unfortunately we did not cross that bridge, but continued along the path, thinking "that couldn't be the right bridge, it's too soon." After several more comfortable miles, it dawned on us that "Yes, we should have crossed that bridge!" A passing biker set us straight, directing us through an unfamiliar neighborhood back to MacArthur Boulevard. Three more or less comfortable miles later, we did find the pub, where some smarter PVSers (John Pulos and Kirk and Peggy Burns) were enjoying their meal.

**ends with a good lunch!**

**All's well that**

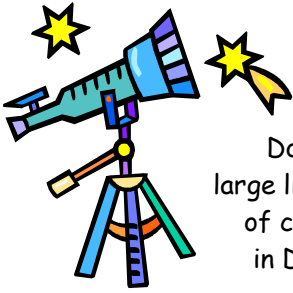
*by Melissa FitzGerald*

Past Events, cont'

## Monthly Meeting

October 17, 2006

*by Dottie Villers*

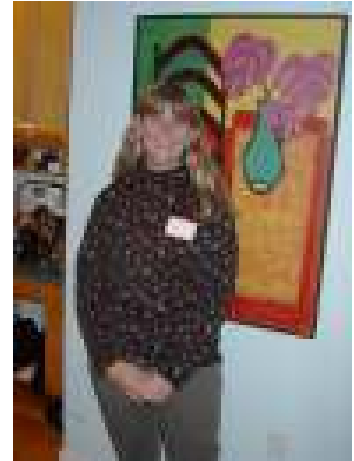


Dorian Janney was our stargazing hostess for the 32 PVSers who attended the October monthly meeting at her home in Gaithersburg. I say "stargazing" hostess because Dorian is an avid astronomer. In addition to teaching astronomy, she has a Dobsonian reflector (a type of large round telescope) and several other telescopes in her large living room. She proved to be an astronomically great hostess, serving up a wide variety of chips & dips, cheeses, and other hors d'oeuvres for the crowd. Since her home (actually in Damascus in spite of the Gaithersburg address) was quite a long way to go for some

people, she offered a prize to the member who had traveled the farthest to come to the meeting. The prize, an Irish tin whistle, was won by Sally Finan, who came from Reston, VA. The meeting was conducted by President David Abraham and included a number of last minute pitches from ski trip leaders to add to the number of members going on this season's PVS ski trips.

Next month's meeting will be at the home of Sally Finan and George Welti and will feature our annual presentation on new ski equipment by Brian Eardley from the Washington Ski Center.

Dorian



---

## Kentlands Stroll

*by Mary Beale*

Our happy group convened in front of Sharon Mulholland's home at the appointed hour on Saturday, October 28<sup>th</sup>. We were embarking on the first half of a PVS doubleheader weekend, the Kentlands Stroll. Oktoberfest would follow on the next day. Barbara Leonhardt issued regular weather reports in the hours leading up to the launch time. In the end it was a somewhat windy fall day, but the rain conveniently stayed away. Our first destination was the Kentlands Art Barn. Barbara and Sharon had persuaded the manager to stay open longer than usual so that we could enjoy the paintings on display. We admired the watercolor landscapes and still lifes before continuing on our stroll. Barbara provided maps of the area on which our route assignment was clearly marked. It seems that most of the streets in Kentlands have a corresponding mews (e.g. Featherstone Street and Featherstone Mews). The neighborhoods convey the feeling of Old Town, Williamsburg, and Middle America. Many homes bore Halloween decorations including giant spider webs, dangling skeletons, and scores of pumpkins. At several points our path meandered alongside a lake. The lakes in Kentlands are all man made. They are remarkably peaceful. Although no one visibly tired, it should be noted and given its due that Jackie Flaherty never strayed far from the lead. Two hours into our walking, Sharon and Barbara directed us inside Buca di Beppo. Seated at one long table, and twelve strong, we shared platters of spaghetti, manicotti, and chicken marsala. Rather uncharacteristically, we had no room for dessert. It all couldn't have gone better.



Carolyn, Dave, Mary, Jackie, Dick, Marilyn, Sharon, Liz, Serge, David, Ray

*Thank you Sharon and Barbara*

Past Events, cont'



The 28<sup>th</sup> **Annual Oktoberfest**

was a.... Kolossal Success!!!

The German food was delicious to all

On this perfect day in the fall!!

With "Mugs a Plenty" of beer and wine

All PVSer's had a great time!

Ocktoberfest's best costume of the day

Went to Kirk Burns, and the McKinley, Ray!!

Better hosts Pat and Jim Vagonis/Margaret Wyckoff couldn't be,

Thank you for your gracious hospitality!!!!



by Carolyn Callaway

Coming Events

January 10-12, 2007



*This is your chance to demonstrate the*

*Lift ticket for Thursday is \$10 with a voucher from Ski Chalet..*

*latest skies, free of charge.*

**North Camp**, the back side of Marsh Mt opened last year. Skiable acres increased by 30%. They added 2 triple lifts, 1 black, 2 blue and 7 green trails.

|                                                       |                              |
|-------------------------------------------------------|------------------------------|
| Room per night (10 <sup>th</sup> & 11 <sup>th</sup> ) | \$79                         |
| Voucher for Thursday lift ticket                      | \$10.00 (free over 70 years) |
| Après ski supplies per person about                   | \$6.00                       |

*Pool and Jacuzzi available so bring swim suits.*

Contact Pat Vagonis (301-838-5545 or [pvagonis@comcast.net](mailto:pvagonis@comcast.net) ) if you are going so she can plan Après Ski on Wed and Thurs nights. You can buy your vouchers from Ski Chalet.

Rooms paid individually. For each room, call WISP Hotel (1-800-462-9477) to reserve your room; Ask for the Ski Chalet demo day rate, and pay one night's deposit with credit card or check. The rate includes 1 to 4 people. We can try to match individuals with roommates if you wish.

**Rooms go fast so CALL NOW if you think you want to go. Cancellation is 14 days prior to first night's stay.**

Lift tickets are obtained individually at the ski area with your ski voucher on Thursday. Week day tickets are regularly \$39, weekends are \$52. Those over 70 years ski free but must show ID.

Meals are paid individually. All rooms have a refrigerator. There are 2-3 places to eat in the hotel. There are several good restaurants in the area for dinner Thursday evening.

Additional plans. If you wish to stay additional days, work with the hotel.



## Ski Trips



### **Steamboat Springs** (Trip is Open)

**Wedel Week Reunion** December 8 – 15 2006

The Potomac Valley Skiers invite you to attend a Wedel Week in Steamboat Springs, Colorado with Dick & Betty Comerford as your host and hostess. Steamboat Springs, Ski Town USA, has a base elevation of 6,900 feet, ideal for anyone who has difficulty adapting to high altitude (sleeping below 7,500 feet keeps the headaches away).

Après-ski activities will be based around our luxury **ski-in/ski-out Sheraton Hotel**. The package includes **all breakfasts, 3 good group dinners, nightly après-ski gatherings, a special awards ceremony, and a post-trip party**. We should be able to ski with Billy Kidd, but if he is not available, we will have a special guest lead us in a warm-up run.

- |                                                               |                                           |
|---------------------------------------------------------------|-------------------------------------------|
| * 7 Nights Lodging                                            | * Average Snowfall > 27 Feet              |
| * 25 Yards to Gondola                                         | * 3,668 Vertical Feet - 2nd Highest in CO |
| * Rooms Have 2 Queen Size Beds                                | * 164 Ski Trails                          |
| * Starbucks Coffee in Each Room                               | * 25 Lifts (1 Gondola)                    |
| * 4 Restaurants & 3 Lounges                                   | * 13% Beg, 56% Int, 31% Adv               |
| * Heated Outdoor Pool                                         | * Lots of local activities                |
| * 7 Hot Tubs, Steam rooms & Saunas                            | * Convenient to Restaurants & Shops       |
| * 4 High Speed Quad Chairs                                    | * Full Service Luxury Hotel               |
| 7 Nights Lodging, Daily Breakfast, 3 Dinners, Après-ski ----- | \$790                                     |
| Air and Ground Transportation-----                            | \$490                                     |
| Total-----                                                    | \$1,280                                   |

**Final Payments are Due. We are currently at 17. We are still open and, in particular, need a single female.**

**Call Dick NOW** 703-777-9374 -- [dick.comerford@adelphia.net](mailto:dick.comerford@adelphia.net)

Check for full amount Payable to Dick Comerford at 307 Lounsbury Ct, Leesburg, VA 20176-2335.



**Limited space may still be available.**

**January 18 through 25, 2007**

Join us for this perennial favorite, for its excellent skiing, and for its many other activities in the Aspen environs. Choose among four entire mountains that share one interchangeable lift ticket with more than 5,000 acres of skiing, and free bus service to Aspen Highlands, Ajax Mountain, and Buttermilk ski areas. Enjoy the convenience of slopeside lodging with direct access to the extensive Snowmass trail system from the Snowmass Mountain Chalet. A stay at this charming Chalet includes a daily family-style breakfast and daily soup lunch, greatly appreciated by trip participants and other guests, many of whom return year after year.

Trip will include group dinners, après-ski parties, and other events. This year we are planning an optional excursion to the mountain village of Redstone for lunch and other activities.

Come join us! Complete trip cost \$1890. Air is arranged with United Airlines.

**Call IMMEDIATELY if interested.**

Contact trip leaders Carolyn Maurer and David DeVilbiss at 703-370-4865 or by e-mail at [carolyn.maurer@verizon.net](mailto:carolyn.maurer@verizon.net).

Carolyn Maurer, 4508 Peacock Avenue, Alexandria, VA 22304

**Call Immediately**

PVS + Blue Ridge Ski Council Presents



## WESTERN CARNIVAL + BIG SKY

**February 3-10, 2007**

**Big Sky** Montana, its Euro-style tram, & **NO WAITING AROUND**. 18 lifts and a spectacular tram transport skiers to 3,600 skiable acres. The terrain on the 3 mountains ranges from the tame wide slopes of *Southern Comfort*, with plenty of **blue terrain**, **excellent slope grooming**, wide-open **powder fields**.

Average snowfall – 400 inches. **Beginner – 17%** **Intermediate – 25%** **Advanced – 37%** **Expert – 21%**.

**Moonlight Basin** area has a mix of **green**, **blue** and **black** trails with, **long, groomed runs** + **The two ski areas are connected**.

**LODGING: at The Summit**. Every room has a sink, small frig, coffee maker, hair dryer, cable TV, & free wireless data ports. Ski storage is in the lobby. Fitness center, swimming pool size hot tub, restaurants in hotel.

**Three high capacity lifts within 100 yards of the entry**

**SKI-OUT, SKI-IN**

**Daily breakfast buffet included.**

**Lodge elevation – 7,500 ft**

**INCLUDED:** + Round trip airfare (Washington to Bozeman)  
+ Round trip transport (Bozeman to lodging) + Seven nights lodging (double occupancy) + All taxes + Baggage handling in & out of hotel + Five out of six-day lift tickets at Big Sky + Welcome Party + Après Ski Beer Blast - + Nastar Race – at Moonlight Basin + Farewell Dinner Dance

Many other activities available – see flyer.

**COST \$1,490** Contact Marty Rine: 703-978-0179 or [mrine@cox.net](mailto:mrine@cox.net) OR Jan Marx: [Jebbmarx@aol.com](mailto:Jebbmarx@aol.com)

Land only = Less \$400. Single supplement = Add \$350. Non-skier = Less \$140.

**SIGN UP:** Marty Rine, 5256 Lonsdale Dr, Springfield, VA 22151 [www.bigskyresort.com](http://www.bigskyresort.com). [www.moonlightbasin.com](http://www.moonlightbasin.com)

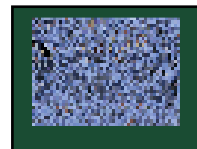
**In addition our PVS group will have:**

- + Pre-trip party.
- + Two après ski gatherings.
- + Optional group dinner.
- + Pot-luck post-trip party.



The Potomac Valley Skiers are returning to a true gem of a resort, Sun Peaks. **We went in 2005, and EVERYONE wanted to go back, so we're doing it!** Sun Peaks is **Canada's newest, brightest destination resort**. It's a skier's paradise. And, unlike the Coastal British Columbia resorts, Sun Peaks Resort is known for its sun. Yes, the sun shines at Sun Peaks. And shines. And shines. And shines--more sunny hours than any other resort in North America! **The BC ski resort logs an average of 2,000 hours of sunshine per year**. That sun, combined with 220 inches of snowfall and mid-winter temperatures of 20 to 25 °F, helps make Sun Peaks a favorite for fair weather ski holidays.

Sun Peaks has some other claims to fame, such as the best grooming in Western Canada and the best weather for skiing in all of Canada. **It has 3,678 acres, a vertical of 2,891 feet, 91 runs and a charming, Tyrolean-style car-free village that twinkles under the alpine starlight**. Sun Peaks skis like Whistler. But, unlike Whistler, it has no coastal rain or fog! For info, e-mail us [sunpeaks2007@potomacvalleyskiers.org](mailto:sunpeaks2007@potomacvalleyskiers.org)



*Hurry, Only 4 Spaces Available. New Dates, March 3-11, 2007  
Same Great Trip, Same Great Price*

**Our 9 day 8 night Trip Includes: 7 Nights at ski-in ski-out at Olympic Gold Medalist Nancy Green's Cahilty Lodge featuring spacious rooms and superbly appointed suites. It has a restaurant, hot tub, bar, and fitness facilities, radios, in-room coffee machines, and more. For only \$31 pp additional you can upgrade to a studio with kitchen and additional amenities including fireplaces or balconies. We have a final night at the 5 Star Fairmont Hotel Vancouver.**

We feature two people per hotel room. 5 of 6 Day lift passes good at all three mountains. 3 great group dinners, incl. a snowshoe, on-mountain fondue dinner. Welcome wine & cheese, happy hours, pre & post trip parties. Airfare, hotel baggage handling and tips, bus gratuities. **GREAT PRICES - \$1,896; 65+ \$1,844; Nonskiers \$1,687**

Land Only \$1,446 (Based on \$1.11 CAN per \$1.00 US) Upgrade to Studio add \$31, Breakfast Package add \$108

This trip sold out early last year so act soon. Please call us for more information and to get a copy of our full flyer at 703 527-7126.

**To sign up send your check for \$1,150 per person payable to Ray McKinley,**

**2326 North Upton Street, Arlington, VA 22207-4045**

## **SKIING IN SCHLADMING, AUSTRIA**

**TOURING IN ATHENS, GREECE AND IN VIENNA, AUSTRIA**

**ATHENS, GREECE – Monday, February 26, 2007 to Saturday March 3, 2007**

**SCHLADMING, Austria - Saturday, March 3, 2007 to Saturday March 10, 2007**

**VIENNA, Austria – Saturday, March 10, 2007 to Tuesday, March 13, 2007**

**ATHENS, GREECE:** Four nights at the Divani Palace Acropolis a five star deluxe hotel near the Acropolis

**SCHLADMING, AUSTRIA:** Seven nights at the Sporthotel Royer a four star hotel.

**VIENNA, AUSTRIA:** Three days at Hotel Regina a four star historic hotel, located in the center of the city.

**THE SKIING:** The region of Schladming-Dachstein-Taussers is one of the largest ski areas in Austria with a four inter connected mountains. Snowmaking on 100% of the ski slopes. There are 90 ski lifts and, 167 kilometers of downhill runs. Glacier skiing on the Dachstein Glacier. Ski runs as long as 5 miles.

**Maximum** elevation 6,600 feet **Vertical drop** 3,700 feet; **Ski Terrain:** Beginner: 30% Intermediate 60% Expert: 10%

Cross country skiing -- 60 Km of cross country ski trails. Lift tickets: The five day regular lift ticket in 2006 was \$168 and \$150 for seniors

### **TRAVEL ARRANGEMENTS:**

Fly from Washington Dulles Airport to Munich on United Airlines and then to Athens, Greece.

Fly from Athens to Munich on Lufthansa airlines. Motor coach to our hotel in Schladming, Austria.

Transfer by motor coach from Schladming, Austria to our hotel in Vienna.

Fly from Vienna on Lufthansa airlines to Munich and then to Washington Dulles airport on United Airlines.

**INCLUDED IN PRICE:** Total Price \$2,900 (double occupancy) includes all of the above plus transfers, buses, and trip insurance. (Price based on Euro price of 1.24 to a dollar). Pre Trip Party, Portage of All Baggage, Post Trip Party.

**Includes Medical Insurance and Trip Cancellation / Interruption Insurance.**

**NOT INCLUDED:** Lunches, Lift Tickets, Diners in Athens and Vienna.

**TOTAL PACKAGE PRICE -- ATHENS+SCHLADMING+VIENNA \$ 2900 (DOUBLE OCCUPANCY)**

Single supplement and Skiing in Schladming (only) – Available on request – price to be determined

**PAYMENT SCHEDULE:** DEPOSIT NOW: \$ 200; Aug.1 \$500; Oct.1 \$500; Dec.1 \$500; Jan.1 \$700

**IF YOU ARE INTERESTED IN JOINING US OR HAVE ANY QUESTIONS:**

Contact: Glade Flake ([gladeflake@aol.com](mailto:gladeflake@aol.com)) 301-762-6890 OR John Smith ([johnhsmith@juno.com](mailto:johnhsmith@juno.com)) 301-299-8376

**TO RESERVE:** Send the trip application form and a deposit check for \$ 200 payable to Glade Flake

TO: Glade Flake, at P.O. Box 60347, Potomac, MD. 20859

\*\*\*\*\*

**NEXT SUMMER--August 9-25, 2007, join Nancy and Ray McKinley to**

## ***See and Ski in Argentina, Brazil***

***The grandeur of Argentina's Andes, the Old World beauty and tango passion of Buenos Aires, and to top it all off – a 3 day add-on to magical Rio de Janeiro, Brazil. 8 days and 7 nights in Argentina's world-class 40,000 acre, 4,100 ft vertical ski resort, Las Leñas, and 5 days, 4 nights in America's most cosmopolitan city, the Paris of the W. Hemisphere, Buenos Aires. And there's an option for a 3 day add on to Brazil's home of Bossa Nova—Rio de Janeiro. Join us and enjoy.***

***While North America suffers summer, enter Argentina's Las Leñas, the largest lift-serviced skiing area in the entire Western Hemisphere. Las Leñas isn't merely a good summer ski area; it's one of the world's GREAT ski areas. This resort is served by 13 lifts, 40 miles of trails, and 4,100-foot vertical drop from its 11,253-foot summit. Las Leñas is 7 times the size of Vail. There's oodles of skiing for every level of skier.***

***Las Leñas' is divided into two main areas. The lower section's nine lifts connect a variety of groomed trails, ideal for beginners and intermediates. Experts seeking the off-piste perfection that has made Las Leñas world-famous continue to huge bowls, steep chutes, and fresh powder. The European village at the mountain's base has shops, restaurants, bars, discos and a 24 hour a day casino. With copious snow, and superb skiing for all levels, Las Leñas is a truly great place to ski in August, or any time!***



***We'll include all lodging in 4 or 5 Star hotels, daily breakfasts, and all Dinners at Las Leñas 2 dinners in Buenos Aires, all transfers, happy hours, airfare from Washington DC, pre and post trip parties, and eye-opening tours in Buenos Aires including a trip to one of the gaucho Estancias (ranches) outside of town. This will include a parillada featuring all the finest of cuisine and entertainment. Our stay in Buenos Aires also offers a not-to-be missed, first-class tango show and dinner.***

We have a spectacular 3-day add-on. ***This will include round trip air to Rio, 4 Or 5 star lodging near Copacabana and Ipanema Beaches.*** We'll tour the city, visit Rio's signature Sugarloaf Mountain, the statue of the Christ, and much more. Rio is the only city in the world with a tropical rainforest within the city limits. We highly recommend this unique city and the add-on.

***Schedule:*** We leave from DC Thurs eve, Aug 9, 2007, spend Fri in Buenos Aires, and leave Sat for a week at Las Leñas. Then to Buenos Aires for 4 days. On Aug 21 we fly to Rio, Brazil's wonderland. On Aug 24 we fly back to DC overnight.

***Cost:*** We don't yet have a firm cost. However, since the Argentine peso is very weak, we expect the cost for ***the 14 day trip to be about \$2,700-\$2,900. To add 3 nights in Rio, Brazil should be, including airfare, \$700-\$900. Our See and Ski trip is for everyone. Space is limited for this trip of a lifetime.*** To hold a space, send a check for \$100 per person, to Ray McKinley. Mail it to 2326 North Upton Street, Arlington, VA 22207-4045. This deposit is refundable until we finalize costs for our trip. Call us at 703-527-7126 for more information. [Or you can e-mail us ArgentinaBrazil2007@potomacvalleyskiers.org](mailto:ArgentinaBrazil2007@potomacvalleyskiers.org)

**Just Cuz**

**Blizzard Warning Issued for Colorado**

By THE ASSOCIATED PRESS

Filed at 10:53 a.m. ET

October 26, 2006

DENVER (AP) -- A powerful snowstorm dumped 18 inches of snow in parts of the Colorado mountains and spread eastward Thursday, snarling traffic and shutting down dozens of school districts. A 125-mile corridor from Colorado Springs to the New Mexico border was under a blizzard warning.

Avalanche experts said recent storms have left a snowpack of up to 2 feet in the mountains and several avalanches have already been reported, including 10 in the past week on the east side of Ten Mile Range in Summit County. A recent snowfall did not bond well with the snow surface from a late-September storm, creating ripe conditions for avalanches, said Colorado Avalanche Information Center forecaster Scott Toepfer.

**PVS BOARD MEMBERS, OFFICERS, and CHAIRPERSONS - 2006-2007**

President - *David Abraham*  
 Vice President - *Mike Strand*  
 Secretary - *Mary Beale*  
 Treasurer - *Dick Laeser*  
 Membership - *Pat Vagonis*  
 Events - *Ray McKinley*  
 Non-skiing Activities - *Mike Strand*

Webmaster - *David Lerner*  
 Ski Trip Cmte Chair - *Bob Marx*  
 TOOT Editor - *Jan Marx*  
 TOOT Proofer - *Bob Marx*  
 TOOT Mailer -  
 Meeting Records - *Sara Huggins*  
 Historian - *Jan Marx*

First Term:  
*Bob Knopes*  
*Dick Laeser*  
*David Lerner*  
Second Term:  
*Charlotte Eddy*  
*Burr Schuler*  
*Dick Schwartzbard*



Bob Harmon is just back from an Elderhostel trip to both islands in Knee Zealand.



## THE KNEE

by Ray McKinley

It's November. And we know what is creeping up on us again—that splendid, wonderful time of year when small white flakes appear to be everywhere. They are glistening on the ground, in your hair, and on the shoulders of your parka. Yes, once again, it's definitely time to bring out the dandruff shampoo.

Seriously, or at least semi seriously (semi seriously would be serio) it is ski season again. Cold diggety! According to Marvin Hass, on October 13, Arapahoe Basin became the first US ski area to open for the season. That wasn't what the A-Basiners reveled in. It was the first time in 6 years they beat nearby Loveland to open. Go figure. In case you didn't know, nearby Charnita (aka Liberty Mountain (sic)) is known as Z Basin. They plan to open not later than February 13,

You have all read the wonderful travelogues put together by Bill Hager as he visits the out of the way trouble spots of the world—Sanaa, Yemen comes to mind. Recently, Bill came through the DC area en route to his newest exotic locale. In a month, watch for Bill Hager's newest strange location. He is going to Brussels, Belgium! Henceforth, Bill will be known as the Brussels Sprout!

A tip of the 'ol Knee Cap goes to our departing Treasurer, Ray Jones. He and Judy are moving to Sarasota, Florida. Ray is most pleased that he, along with Marvin Hass moved PVS into the computer era. Today, over half of our members receive TOOT electronically—at a significant cost savings for the club. Ray and Marvin's efforts have certainly saved us a dues increase. The Knee is still in the old-fashioned school. I enjoy receiving TOOT in hard copy. That way I can cut out my columns and put them in my hope chest.

Ray and Judy Jones may run into Jackie Rosen in Sarasota this winter. Jackie will be leading a group of opera lovers there in February. Whilst there, the group will see Wagner's famous opera, *Tristan and Sarasota*.

Jan Marx claims she procrastinates so much she didn't get birthmarks until she was 7. I bet she plans to live well past her demise, too.

All of a sudden, in the last few years, PVSers are going to Africa. We had a ski trip to Morocco in 2003. And the Marxes, the Strands and the Knopes have all been to southern Africa—the Strands twice. Our next visitor will be Suzanne Boisclair. In January, she will visit Kenya and one of my favorites, Tanzan-Knee-a.

Virginian Sue Lyon has her home for sale. She'll move to a nearby adult community. I thought Sue had been an adult for several years

We all had a great weekend enjoying the fall foliage, which was at its peak, at Betty Lawrence's Blue Knob ski lodge. If you haven't been there, you should go—it's an incredibly homey place. Kirk Burns told tales of yore when he was a ski patroller there. Most interesting was when he had to rescue a hippopotamus, yes a hippopotamus, albeit a small one, from the chairlift. However, the really kneet thing at Betty's was that she had a copy of the book "1936-1986, 50 Years of SCWDC." If you don't know it, SCWDC actually stands for Some Club in Wilmington, Delaware C. The book is rampant with PVS in both words and pictures.

There was a fascinating article by the late Dot Mason, a long time PVSer, and a former SCWDC Historian. In 1964, before PVS was started, Packard Anderson, one of our founders and a then SCWDC officer tried to amend their bylaws. He and others were worried that SCWDC had dropped its ski roots and was becoming a social club. They wanted to make taking the Basic Ski Test a requirement for SCWDC membership. Other officers were worried that such a rule would diminish SCWDC membership—then at 7,000—so they turned down the skiing rule. Packard and a handful of other dissident members then went on to form "The Club for Skiers," Potomac Valley Skiers.

There are some wonderful photos of the late Marylee Grasley skiing with Stein Erickson.

There were also lots of photos of long time PVSers who left SCWDC. These included Bill Anderson, Ham Morton, and the late John and Eloise Newdorp.

At the end of the 50<sup>th</sup> Ankneeverary Book was a listing of SCWDC Winter Carnival Queens. There is a great photo of Dorrie Waddick who was the 1973 Queen, and another

## Calendar

|     |       |     |                                                                               |
|-----|-------|-----|-------------------------------------------------------------------------------|
| Nov | 4     | Sat | Chili Hike with McKinley's                                                    |
| Nov | 16    | Thu | Eclipse concert a St Patrick's Church, DC; call McKinley or Abraham for info. |
| Nov | 17    | Fri | Wine tasting, 8 PM at Waddick's                                               |
| Nov | 21    | Tue | Monthly Meeting at Finan's/Welti's                                            |
| Nov | 28    | Tue | ExCom at Marx's                                                               |
| Dec | 19    | Tue | Monthly Meeting at Monaghan's                                                 |
| Dec | 21    | Thu | Ski Liberty - day trip - Huggins                                              |
| Jan | 9     | Tue | ExCom - Dec/Jan combo                                                         |
| Jan | 10-12 |     | WISP Demo Days                                                                |
| Jan | 16    | Tue | Monthly Meeting at Marx's                                                     |
| Feb | 20    | Tue | Monthly Meeting at Beale's                                                    |



## Ski Trip Calendar - 2006/2007

### Western, Euro, South America

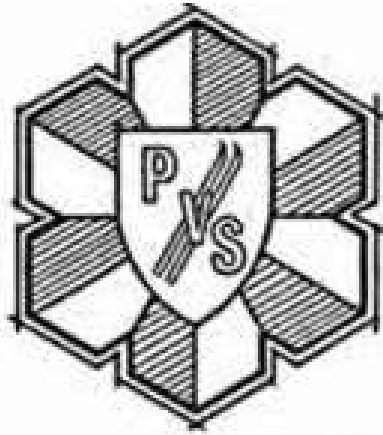
|     |          |                                                                      |
|-----|----------|----------------------------------------------------------------------|
| Dec | 8-15/06  | <u>Steamboat</u> (Dick Comerford)                                    |
| Jan | 18-25/07 | <u>Snowmass</u> (C. Maurer/D. DeVilbiss)                             |
| Feb | 3-10/07  | <u>Big Sky</u> (PVS/BRSC M. Rine/J. Marx)                            |
| Feb | 3-11/07  | <u>Sun Peaks</u> (Ray/Nancy McKinley)                                |
| Mar | 3-10/07  | <u>Schladming</u> (PVS/BRSC G. Flake/J. Smith)                       |
|     |          | <i>(Feb 26-Mar 3 Athens: Mar 11-13 Vienna)</i>                       |
| Aug | 9-25/07  | <u>Las Leñas</u> , Argentina (Ray/Nancy McKinley)                    |
|     |          | <i>(Aug 18-21/07 Buenos Aires: Aug 21-25 Rio de Janeiro, Brazil)</i> |

## Nats Game Tickets

Washington Nationals Baseball Tickets. We have a group of subscribers to Nat's four season tickets. Because of turnover, we have openings for anyone who wants to buy (minimum) 2 tickets at 5 games. (Alternatively 4 tickets at 2 games plus 2 tickets at 1 game.) Seats at Sect 306, Row 2, Seats 10-13. These are great seats. Cost this year at \$29.00 each ticket.

Contact Mike Strand at 301-468-1535 or [hrdyna@aol.com](mailto:hrdyna@aol.com)





POTOMAC  
VALLEY  
SKIERS, Inc.



Jan and Bob Marx  
8312 Oakford Dr.  
Springfield, VA 22152